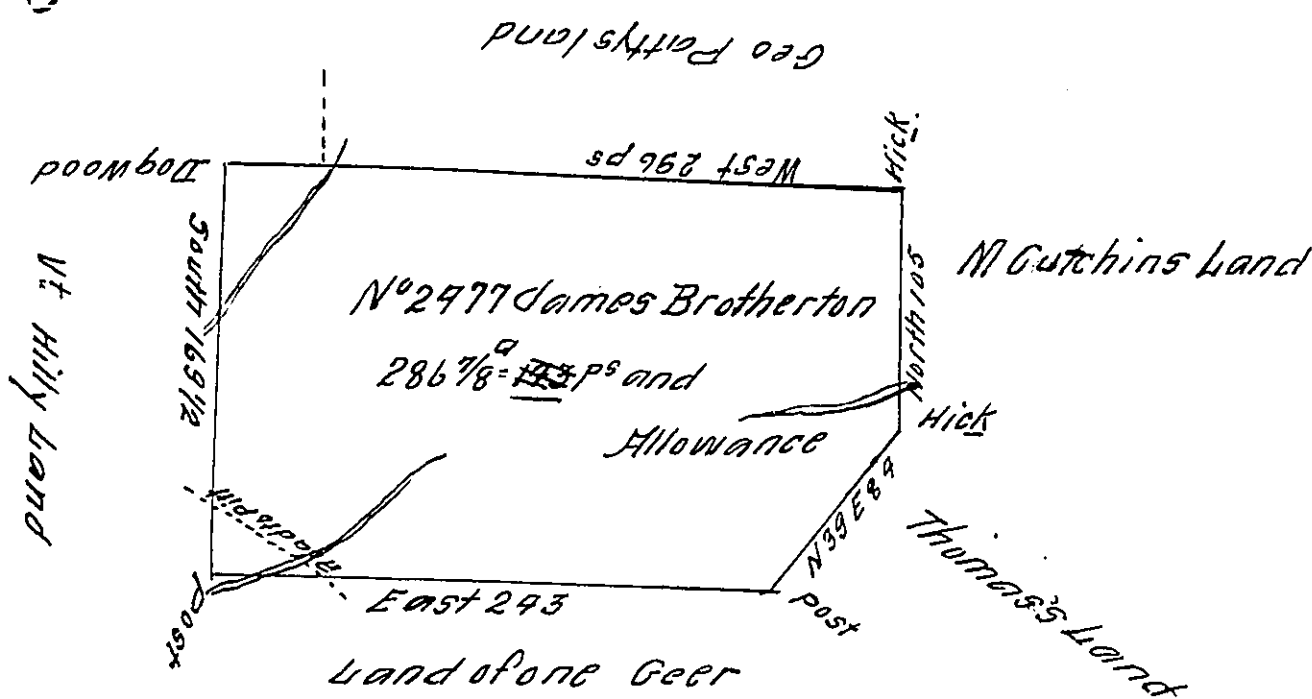


C197-6R

C159-122



In pursuance of an Order N° 2977 dated the 3<sup>d</sup> of April 1769 Was  
 Surveyed for James Brotherton the 8<sup>th</sup> of May 1770 the above Descri-  
 bed tract of Land (called the Miner) Containing two Hould and Eighty six  
 Acres & 143 perches with an Allowance proportion (0.61) 6 p Cent  
 Situate on a Branch of Crabtree Run near the Redoubts in Bedford  
 County &c  
 To John Lukens }  
 Esq' 5 Gen' }

p  
 Robert M. Gren  
 D.S.

IN TESTIMONY that the above is a copy of the original remaining on file in  
 the Department of Internal Affairs of Pennsylvania, made  
 conformably to an Act of Assembly approved the 16th day of  
 February, 1833, I have hereunto set my Hand and caused  
 the Seal of said Department to be affixed at Harrisburg,  
 this Sixth day of May 1912

*Henry Hoover*  
 Secretary of Internal Affairs.